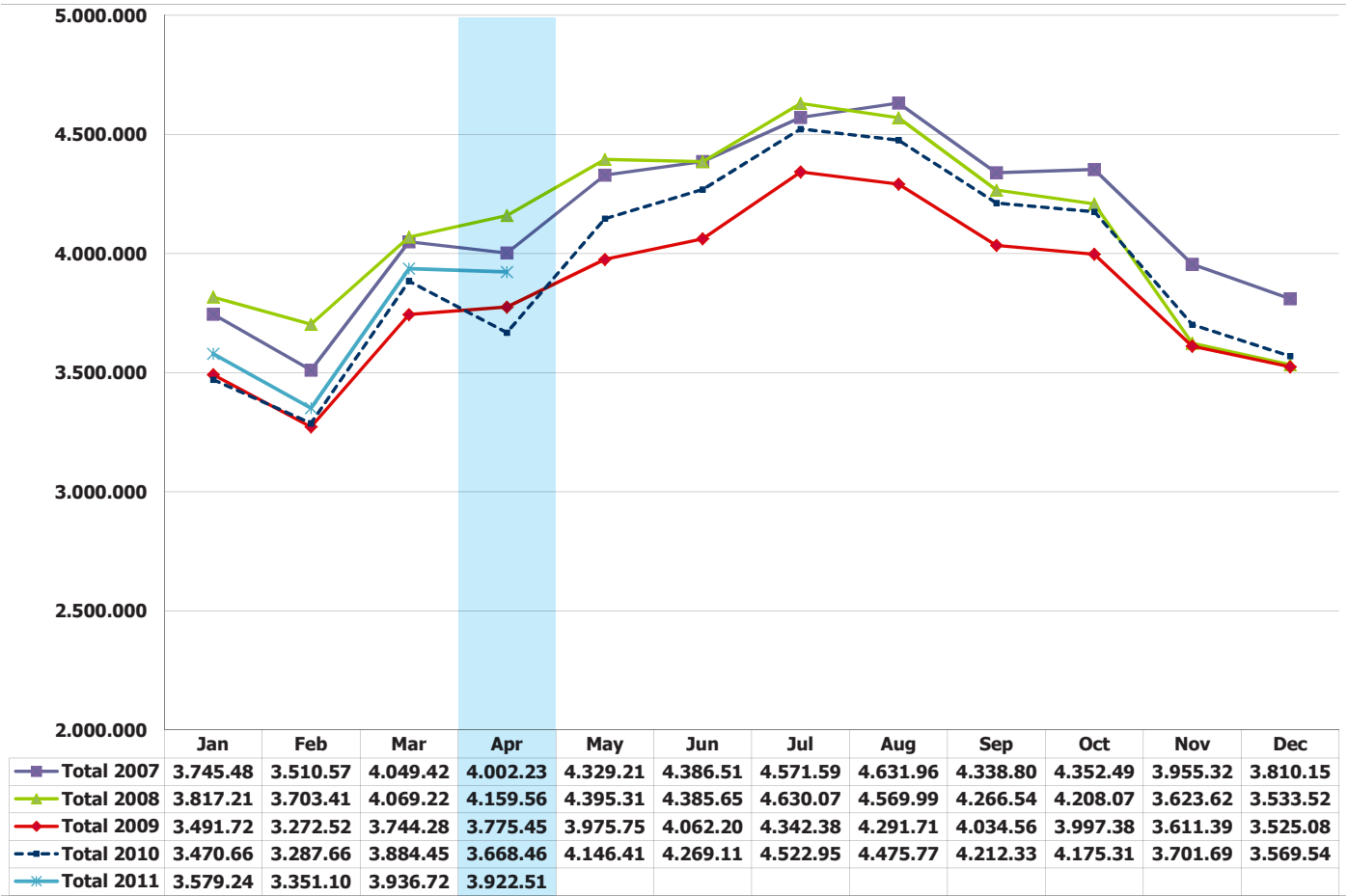


YEAR TO DATE

IFR MOVEMENTS: APRIL 2011



April 2011 shows a slight dip from March, but steep growth compared to 2010. This growth should however be interpreted with caution due to the disruption of European airspace by the Eyjafjallajökull volcano last year.

*Most European data sourced for STATFOR

**Includes contributions from:

- | | | |
|---------------|-------------------|-------------------|
| Aena | EANS | NAATC |
| AEROTHAI | ENAV | NATA |
| Airservices | FAA | NATS |
| Airways NZ | Finavia | NAV Portugal |
| ANS Czech | GCAA | Naviair |
| ANSW | Hellenic | Oro Navigacija |
| ATNS | HungaroControl | PANSA |
| Austrocontrol | IAA | ROMATSA |
| Avinor | ISAVIA | Sakaeronavigatsia |
| AZANS | Kazaeronavigatsia | SENEAM |
| Belgocontrol | LFV | skyguide |
| BULATSA | LGS | Slovenia Control |
| CAAS | LPS | SMATSA |
| DFS | LVNL | State ATM Corp |
| DHMI | MATS | UkSATSE |